



MAYDAY HILLS ART SOCIETY

NEWSLETTER

No 11. Term 1. January to June 2022

Kurrajong Way, Mayday Hills Village. Beechworth 3747
www.maydayhillsartsociety.com

Greetings to all! We are pleased to bring you our latest newsletter that covers all of the planned activities for the first half of 2022. As we continue to emerge from the pandemic's long shadow there seems to be a flowering of new opportunities. Enclosed are details about more wonderful Art talks and Café Scientifique afternoons, films in our Upstairs Playhouse and art workshops for members and non-members of the Society. We are also delighted to report that all the studios are currently occupied. We welcome all of our new tenants who are bringing to the Society their talents and professionalism.

Wild Film Festival

Celebrating Wild Magazine's 40th Anniversary



To celebrate *WILD* magazine's 40th birthday the magazine created a special film festival capturing their core themes: Adventure, Wilderness and Conservation. Two fully booked screenings were held in the Upstairs Playhouse theatre at the Art Society on Sunday 30 January. Eight short films focussed on activities in places across Australia and New Zealand with many of the films featured made by regular contributors to *WILD*. The Art Society enjoyed hosting the first event for the year and had the added bonus of welcoming several new members.



EVENTS @ MDHAS

ART TALKS

We look forward to meeting new speakers this term. Please note the changed time to Sunday afternoons. This allows more people to attend and is always a good way for members and guests to meet and mingle. Gold coin donation. Contributions to afternoon tea are always gratefully accepted.

Sunday 6 March 3.00pm

Dore Stockhausen



German born painter Dore Stockhausen is an award-winning artist based in Australia whose works have been exhibited both nationally and internationally. Living in a rural community, her art is most often influenced by the natural environment, as well as her travels. Stockhausen's abstract artistic expression shares her personal response to the ethereal beauty of the landscape, while also reminding us of human interference. She wishes to portray time, a look at the past, the now, and glimpses into the future. We are delighted to have Dore and her partner, gold and silversmith Marcus Foley, two of Australia's leading artists, living in Beechworth. Dore is currently spending much valuable time painting in one of the studios at the Art Society while her new studio and home are renovated.

www.oneofftwo.com

First ART TALK for the year. See you there!



Sunday 1 May 3.00pm

Kirrily Anderson

Award-winning artist Kirrily Anderson creates nature inspired work with a nostalgic bent. Influenced by the intricacies of the natural environment, both her work on paper and her murals embrace tiny details that call the viewer to slow down and see the often unseen. Kirrily has curated and co-curated a number of exhibitions and street art-based events.

In 2017 she moved to Chiltern. Since moving to the area, Kirrily's work has focused strongly on public art, installing murals for a number of local councils, schools, festivals and businesses. In December 2021 she held a successful exhibition at the Murray Art Museum Albury (MAMA). www.kirrilyanderson.com

Come along in May to see Kirrily's wonderful work and hear from her about her successful art career!



**For catering purposes please RSVP to our fabulous ART TALKS!
bibart@bigpond.com 0412 126 219**

CAFÉ SCIENTIFIQUE

The Art Society is the only Australian member of the worldwide organisation Café Scientifique. The Café is a place where, over a cup of tea or coffee, anyone can come to hear an informal talk about science and technology and to discuss and debate with an expert. The following Café Scientifique talks will be held at MDHAS this term. We are proud to present:

Sunday 3 April 3.00pm

Dr Ewen Silvester



Dr Ewen Silvester is an Associate Professor with La Trobe University. He is an aquatic biogeochemist with research interests in understanding biogeochemical processes in rivers and wetlands, particularly the patterns and responses of these systems to seasonal changes and climatic events. Ewen's expertise was integral to the *Rivers of Gold* project concerning mining during the 19th century. This work focussed on three rivers, including the Ovens, and was aimed at determining exactly what happened to the rivers, and how historic mining continues to influence them today. It gives improved knowledge of the impact of mining on rivers in Victoria for better catchment management, more effective strategies to revegetate and control erosion, enhanced management of Aboriginal cultural heritage and has implications for public health.



Sunday 5 June 3.00pm

Ian Dicker

Changes in bush fire management in NSW over the past 35 years (from an insider's viewpoint). Bushfire has become more ingrained in the Australian population in the past 35 years for a range of reasons, including shifts of population away from the higher density urban areas, expansion of the cities further into rural areas and climate change leading to increased frequency and severity of fire events. These years have also witnessed some of the most dramatic changes to the way bushfires are managed. After a career in fire control Ian started with the NSW National Parks and Wildlife Service as Fire

Management Officer in the Snowy Mountains Region and is now the Team Leader Fire, Jindabyne. While bushfire management has been the focus of his career, Ian specialises in fire aviation, particularly in air attack supervision during fire fighting events, but also aerial ignition for fuel reduction burning.



WORKSHOPS

TERM 1 ART WORKSHOPS

Introduction to botanical art
with Christine Cansfield-Smith

Saturday 19 and Sunday 20 March

\$180 non-members, \$160 members

Bookings essential. Christine 0412 126 219 bibart@bigpond.com

Materials provided. Information on enrolment.

A few places still available!

White flowers on tinted paper with graphite and coloured pencils
with Narelle Thomas

Saturday 21 and Sunday 22 May

\$180 non-members, \$160 members



Narelle Thomas is based in Wagga Wagga. She is a dynamic and prolific artist who is also a teacher of visual arts and botanical art. Her works in watercolour and graphite have been exhibited widely in NSW and the ACT from the Bayview Galleries, Sydney to the Wagga & Regional Gallery to annual events like the exhibitions for BASA and Botanica and the Canberra Botanical and Beechworth Botanica. Her work will feature prominently at the Beechworth Botanica exhibition managed by MDHAS during Easter 2022.

Narelle's work focusses on intricately detailed botanical watercolours of indigenous plants, insects and wildlife, to large graphite drawings pushing the boundaries of vision. In this two day workshop Narelle will instruct students in using both graphite and coloured pencil on tinted (grey) paper.

Bookings essential. Christine 0412 126 219 bibart@bigpond.com. Material list provided on enrolment.

More art workshops coming in the second half of 2022. If you have any suggestions for class topics please contact Christine. Mobile number and email address above.



EXHIBITIONS

BEECHWORTH BOTANICA ANIMAL MAGNETISM

Mayday Hills Art Society is delighted to present a fabulous exhibition of superb art from botanical and wildlife artists from around Australia.

EXHIBITION OPENING
Wednesday 13 April 2022
Exhibition 14 to 20 April
10.00am to 4.00pm
Memorial Hall

Artwork and merchandise for sale.
Gold coin donation
admin@maydayhillsartsociety.com



(left)
Gold 'n' Zebra
Kate Jenvey
Oil & gold leaf on
canvas

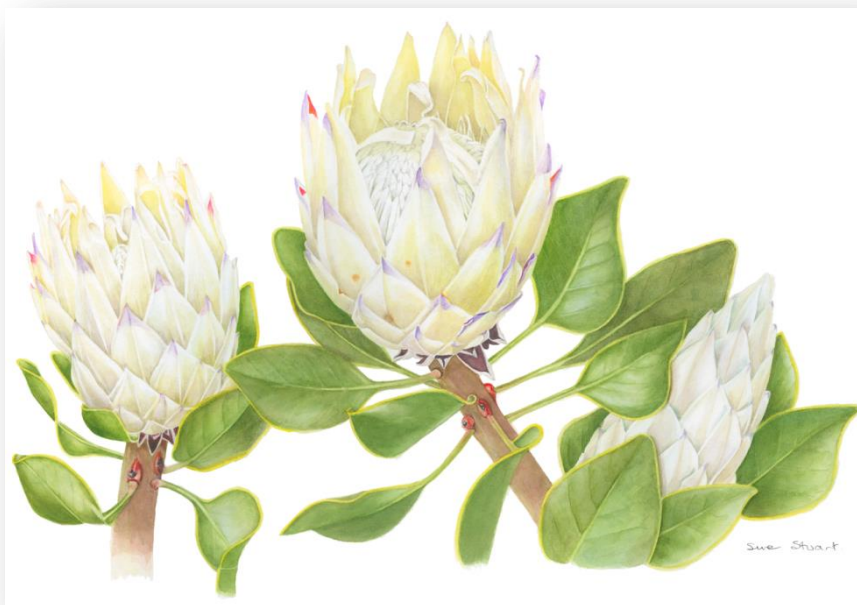
(right)
Emu
Vivien Pinder
Coloured pencil on
pastelmat

(below)
White King Protea
Susan Stuart
Watercolour on
paper



ENTRIES CLOSE 14 MARCH

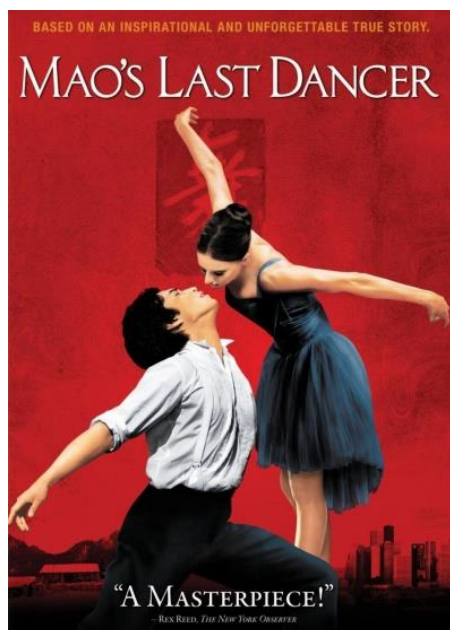
<https://maydayhillsartsociety.snapforms.com.au/form/beechnorth-botanicaanimal-magnetism-entry-form>



MOVIES @ MDHAS

One of the many benefits of joining the Mayday Hills Art Society is automatic membership to the MDHAS Film Club. The Art Society operates a non-commercial theatre and is a member of the Federation of Victorian Film Societies. This means that members can attend any screening free of charge and bring one guest. There is no admission charge.

Screenings will now take place on **SUNDAY AFTERNOONS**. What better time than this to enjoy a great film while having afternoon tea. Tea, coffee, ice creams and snacks are available for purchase. Following are the fabulous films on offer this term. See you upstairs at the Playhouse Theatre! **FILMS SHOWN WITH SUBTITLES. BOOKINGS ESSENTIAL.**



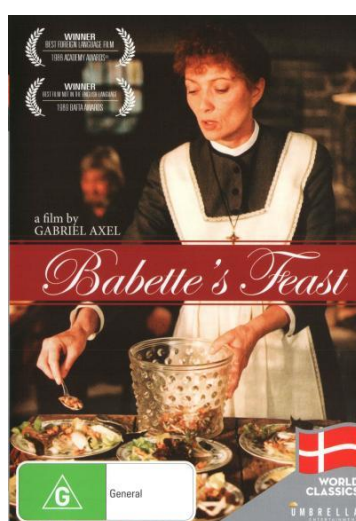
SUNDAY FEBRUARY 27 @ 3.00pm

This Australian film, directed by Bruce Beresford, is based on the professional dancer Li Cunxin's 2003 autobiography of the same name. At the age of 11 Li was plucked from a poor Chinese village by Madame Mao's cultural delegates and taken to Beijing to study ballet. In 1979, during a cultural exchange in Texas, he fell in love with an American woman. Two years later he was principal dancer for the Houston Ballet. He eventually joined the Australian Ballet and is now the fifth Australian Director of the Queensland Ballet. Released in 2009 by Roadshow Films. One of the highest grossing films of all time in Australia.

SUNDAY 27 MARCH



SUNDAY 24 APRIL



SUNDAY 29 MAY



Save the date! Further information about each of these films will be emailed to members closer to the date. All screenings at the Upstairs Playhouse Theatre, MDHAS.



EXHIBITION OPPORTUNITY FOR ALL LOCAL ARTISTS!

The beautiful ArtScape Cottage on Malakoff Road is a peaceful and unique retreat for visitors to Beechworth. The cottage has a selection of musical instruments for guests as well as the works of local artists that are on display and available for purchase. All artists are invited to exhibit their work in the cottage. **No commission charged on sales.**
Contact Claire 0455 290 011.

OUT AND ABOUT



PHOTOGRAPHS BY CLAIRE MITCHELL

If you are passing by or visiting the new premises of the Indigo Veterinary Service please take time to see the beautiful, colourful photographs of fauna that grace the walls. They are the first of an ongoing, changing exhibition by MDHAS member Claire Mitchell.

GOLDEN HORSESHOES FESTIVAL

Exciting news for Beechworth. The Festival is on again this Easter! The Committee have asked the Mayday Hills Art Society members if we would like to volunteer (not for the Committee) to help with the myriad of tasks on the day. This is an important event attracting many visitors to Beechworth. The Beechworth

Botanica/Animal Magnetism exhibition that is presented by MDHAS will be major feature of the program of events during the Festival. To become a volunteer for the Festival weekend contact Jenny by email: jenny.gilliver@gmail.com.

ART EDUCATION



Each Monday members receive an email with links to short videos about art or architecture. They are produced by SMART HISTORY. This New York based organisation has recently released the following book online - *Reframing Art History* is an open-access multimedia art history

"textbook" that gives you a guided journey through the living, breathing, meaningful side of art history. With Lauren Kilroy-Ewbank, Smarthistory's Dean of Content and Strategy, as general editor and more than 40 expert collaborators, *Reframing Art History* has grown to be a one-of-a-kind digital textbook that focusses on art from around the world and considers issues of cultural entanglements, racial and gender ideologies, science and new technologies, materiality, cultural heritage issues, and more. 79 chapters will be published between January–April 2022. Completely free to the public at the following URL:

<https://smarthistory.org/reframing-art-history>

Mayday Hills Art Society Board of management

Chair – Dr Jenni Munday, Secretary/Manager – Christine Cansfield-Smith,
Treasurer – Bob Richards, Member and Archivist - Dr David Lawrence